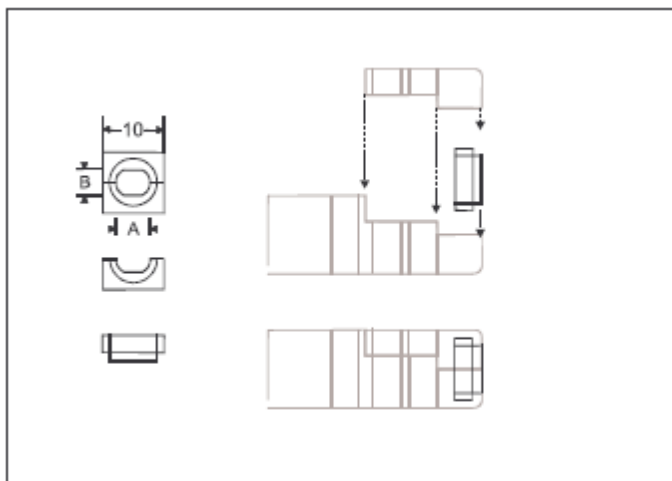
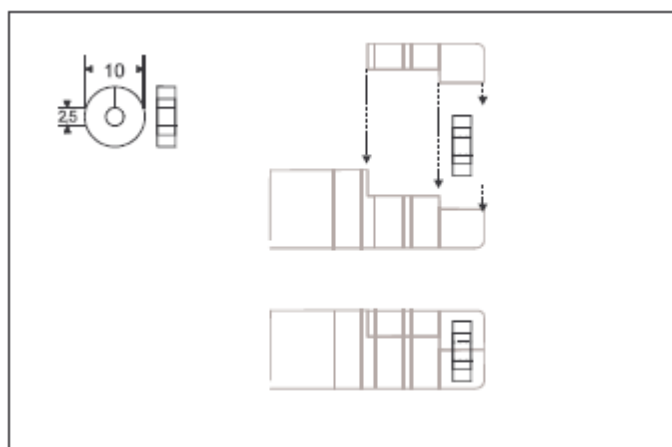


**CRIMP INSERT**



**GROMMET**



**WIRE INSERT**

**APPLICATION:**

Designed for soldering or crimping on mineral insulated cable or crimping on insulated wire

**CONSTRUCTION:**

Brass machined insert with 0,1 mm tolerance on the cable OD

PART NUMBER	A [mm]	B [mm]
A-20.025-1	1,1	2,4
A-20.025-2	1,6	2,4
A-20.025-3	1,7	2,4
A-20.025-4	2,1	3,2
A-20.025-5	2,4	3,2
A-20.025-6	3,1	4,3
A-20.025-7	3,3	4,3
A-20.025-8	4,6	6,0
A-20.025-9	4,9	6,0
A-20.025-10	6,1	7,9
A-20.025-11	6,5	7,9
A-20.025-12	Blind	7,9
A-20.025-13	5,6	6,5
A-20.025-14	7,0	7,9
A-20.260-1	9,0	10,0

**APPLICATION:**

Fitted in entrance hole of the connector to prevent moisture and dirt from entering the connector. Has limited strain relief capabilities

**CONSTRUCTION:**

Neoprene ring slit for easy mounting over the wire.

Will compress on the wire when cover is fitted

**TEMPERATURE RATING:**

120 deg. C Max.

**PART NUMBER**

A-20.048-1

**APPLICATION:**

Wire inserts will provide a good strain relief without protruding parts from the connector

**CONSTRUCTION:**

Thermoplastic material with round or oval hole to fit around a specific wire. Other dimensions available on request.

PART NUMBER	ROUND/OVAL	A [mm]	B [mm]
A-20.076-5	R	3,5	
A-20.076-24	R	2,0	1,5