



MINIATURE 4-20mA OUTPUT IS® PRESSURE TRANSDUCER

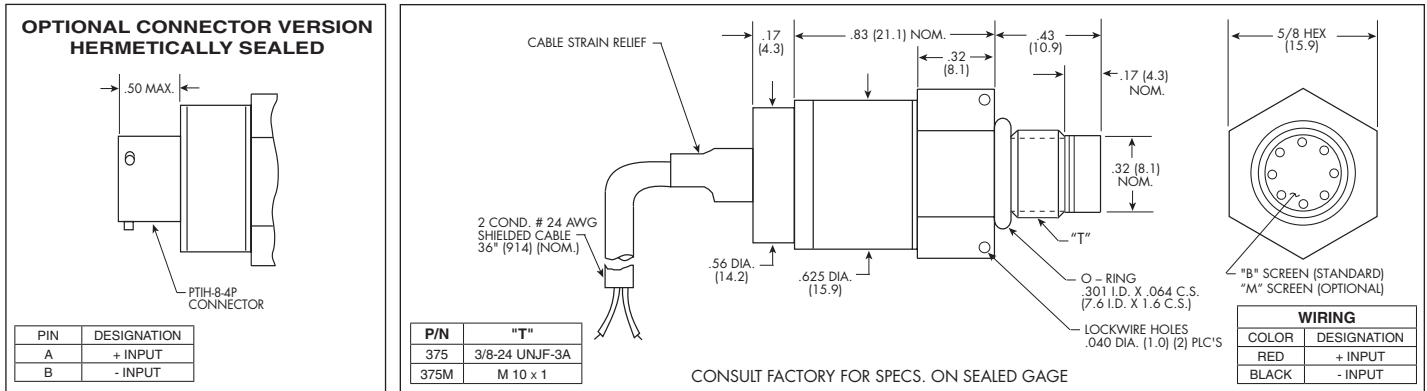
ETL-200-375 (M) SERIES

- 4-20mA Output
- 2 Wire Operation
- Hybrid Microelectronic Signal Conditioner
- Patented Leadless Technology VIS®
- All Welded Construction
- Secondary Containment On Absolute And Sealed Gage Units
- Aerospace Quality Components
- 3/8-24 UNJF or M10 X 1 Thread



ETL-200-375 and ETL-200-375M transducers employ the same approach to transducer construction as the standard ETL-375 and ETL-375M series. The ETL Series uses Kulite's Patented Leadless Technology. The Kulite proprietary electronics module in this product

line, however, provides a current output signal (4 to 20 mA). These instruments are an excellent choice for applications requiring the current output signal but in which space and/or weight are at a premium.



INPUT Pressure Range	1.7 25	3.5 50	7 100	17 250	35 500	70 1000	170 2500	350 5000
Operational Mode	Absolute, Gage, Sealed Gage							
Over Pressure	2 Times Rated Pressure to 1000 PSI (70 BAR) 1.5 Times Rated Pressure Above 1000 PSI to a Max. of 6000 PSI (420 BAR)							
Burst Pressure	3 Times Rated Pressure to a Max. of 10000 PSI (700 BAR)							
Pressure Media	All Nonconductive, Noncorrosive Liquids or Gases (Most Conductive Liquids and Gases - Please Consult Factory)							
Minimum Voltage Required	9 V Minimum Voltage Required Across The Input and Output Wires							
Rated Electrical Excitation	12 - 32 VDC							
OUTPUT Output	4 - 20 mA							
Bandwidth (-3dB)	DC to 750 Hz							
Combined Non-Linearity, Hysteresis and Repeatability	± 0.1% FSO BFSL (Typ.), ± 0.5% FSO (Max.)							
Resolution	Infinitesimal							
Natural Frequency (KHz) (Typ.)	Greater Than 400 KHz							
Acceleration Sensitivity % FS/g Perpendicular Transverse	1.9x10 ⁻³ 5.0x10 ⁻⁵	1.0x10 ⁻³ 3.1x10 ⁻⁵	5.2x10 ⁻⁴ 2.0x10 ⁻⁵	2.2x10 ⁻⁴ 1.0x10 ⁻⁵	1.1x10 ⁻⁴ 7.0x10 ⁻⁶	6.2x10 ⁻⁵ 4.3x10 ⁻⁶	2.6x10 ⁻⁵ 2.3x10 ⁻⁶	1.5x10 ⁻⁵ 1.5x10 ⁻⁶
Insulation Resistance	100 Megohm Min. @ 50 VDC							
ENVIRONMENTAL Operating Temperature Range	-65°F to +250°F (-55°C to +120°C)							
Compensated Temperature Range	0°F to +212°F (-18°C to +100°C) Other Ranges Quoted on Request							
Thermal Zero Shift	± 1% FS/100° F (Typ.)							
Thermal Sensivity Shift	± 1% /100° F (Typ.)							
Linear Vibration	100g Peak, Sine up to 5000 Hz							
Altitude	-150 ft. to +70,000 ft. Will Not Damage Sensor							
Humidity	100% Relative Humidity							
Mechanical Shock	100g half Sine Wave 11 msec. Duration							
PHYSICAL Electrical Connection	2 Conductor 24 AWG Shielded Cable 36" Long							
Weight	24.5 Grams (Max.) Excluding Cable							
Pressure Sensing Principle	Fully Active Four Arm Wheatstone Bridge Dielectrically Isolated Silicon on Silicon Patented Leadless Technology							
Mounting Torque	80 Inch-Pounds (Max.)							

Note: Custom pressure ranges, accuracies and mechanical configurations available. Dimensions are in inches. Dimensions in parenthesis are in millimeters.

Continuous development and refinement of our products may result in specification changes without notice - all dimensions nominal. (J)

KULITE SEMICONDUCTOR PRODUCTS, INC. • One Willow Tree Road • Leonia, New Jersey 07605 • Tel: 201 461-0900 • Fax: 201 461-0990 • <http://www.kulite.com>