



RATIOMETRIC OUTPUT PRESSURE TRANSDUCER

ETM-435-375(M) SERIES ETM-435-375(M) CO SERIES

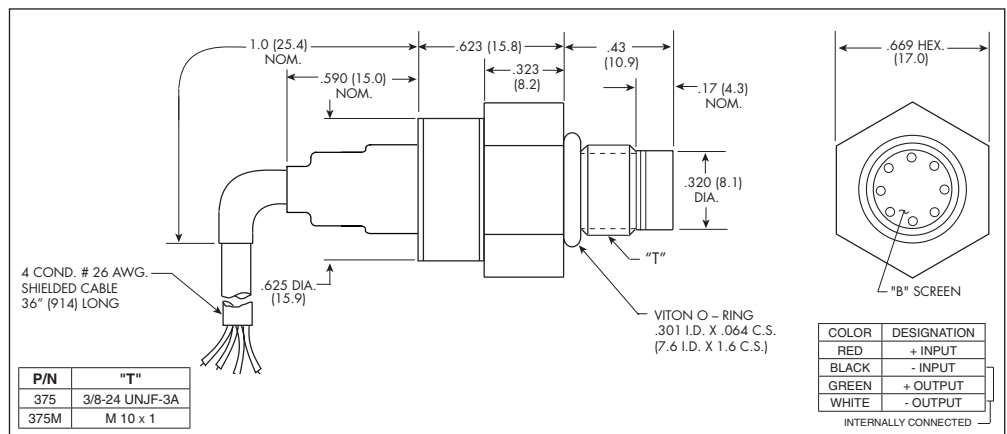
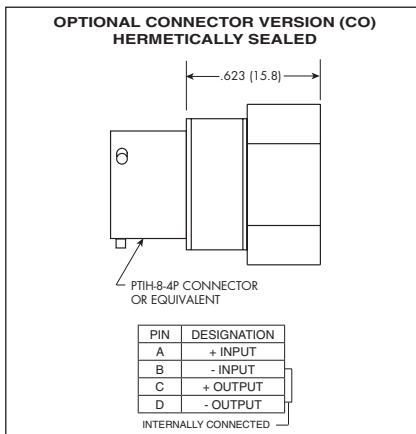
- Ratiometric Amplified Output
- Hybrid Microelectronic Amplifier
- Flush Diaphragm
- All Welded Construction
- Secondary Containment On Absolute And Sealed Gage Units
- 3/8-24 UNJF or M10 X 1 Thread
- Designed For Industrial and Automotive Applications
- Intrinsically Safe Applications Available
(i.e. IS-ETM-435(X)-375)



The ETM-435-375 is a miniature threaded pressure transducer. The hexagonal head and o-ring seal make it easy to mount and simple to apply.

The ETM-435-375 utilizes a flush metal diaphragm as a force collector. A solid state piezoresistive sensing element is located immediately behind this metal diaphragm which is protected by a metal screen. Force transfer is accomplished via non-compressible silicone oil. This sensing sub assembly is welded to a stainless steel body.

Incorporation of a Kulite proprietary electronics module within the main body of this product allows for operation from a ratiometric power supply of 5 VDC. Standard output is a stable, low noise 0.5 to 4.5 VDC signal.



INPUT	Pressure Range	3.5 50	7 100	10 145	17 350	35 500	50 725	70 1000	170 2500	350 5000	700 BAR 10000 PSI
	Operational Mode	Absolute, Sealed Gage									
	Over Pressure	2 Times Rated Pressure									
	Burst Pressure	3 Times Rated Pressure									
	Pressure Media	Any Liquid or Gas Compatible With 15-5 PH or 316 Stainless Steel (All Media May Not Be Suitable With O-Ring Supplied)									
	Maximum Electrical Current	20 mA									
OUTPUT	Rated Electrical Excitation	5 VDC \pm 0.25 VDC									
	Output	0.5 to 4.5 VDC Ratiometric									
	Output Impedance	200 Ohms (Max.)									
	Bandwidth (-3dB)	DC to 3 KHz									
	Accuracy (Total Error Band) Combined Non-Linearity & Hysteresis & Temperature & End Point Settings	\pm 2.7%									
	Resolution	Infinitesimal									
ENVIRONMENTAL	Acceleration Sensitivity % FS/g Perpendicular	3.0x10 ⁻⁴	1.5x10 ⁻⁴	2.8x10 ⁻⁴	2.2x10 ⁻⁴	1.1x10 ⁻⁴	8.0x10 ⁻⁵	6.2x10 ⁻⁵	2.6x10 ⁻⁵	1.5x10 ⁻⁵	1.3x10 ⁻⁵
	Insulation Resistance	100 Megohm Min. @ 50 VDC									
	Operating Temperature Range	-40°F to +275°F (-40°C to +135°C)									
	Compensated Temperature Range	-13°F to +275°F (-25°C to +135°C) Other Ranges Quoted on Request									
	Linear Vibration	100g Peak, Sine up to 5000 Hz									
	Humidity	100% Relative Humidity									
PHYSICAL	Mechanical Shock	20g half Sine Wave 11 msec. Duration									
	Electrical Connection	4 Conductor 26 AWG Shielded Cable, 36" Long CONNECTOR OPTION: PTIH-8-4P Connector or Equivalent									
	Weight	24.5 Grams (Max.) Excluding Cable									
	Pressure Sensing Principle	Fully Active Four Arm Wheatstone Bridge Dielectrically Isolated Silicon on Silicon									
	Mounting Torque	80 Inch-Pounds (Max.) 9 Nm									

Note: Custom pressure ranges, accuracies and mechanical configurations available. Dimensions are in inches. Dimensions in parenthesis are in millimeters.

Continuous development and refinement of our products may result in specification changes without notice - all dimensions nominal. (B)

Kulite miniature pressure transducers are intended for use in test and research and development programs and are not necessarily designed to be used in production applications. For products designed to be used in production programs, please consult the factory.