



## AUTO/MOTOR SPORT IS® PRESSURE TRANSDUCER

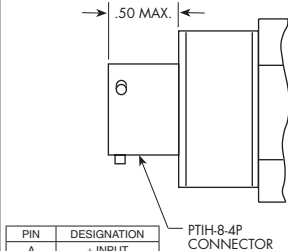
### HKL-AC-375 (M) SERIES

- World's Smallest In Its Class
- Acceleration/Vibration Insensitive Design **VIS<sup>2</sup>**
- Light Weight And Compact Construction

This new generation of transducers has been designed to meet the ever increasing demands for smaller and lighter sensors. The HKL-AC-375 incorporates the latest Kulite patented and patent pending technologies in pressure sensor development. One of these patented innovative technologies makes the HKL-AC-375 insensitive to acceleration forces.

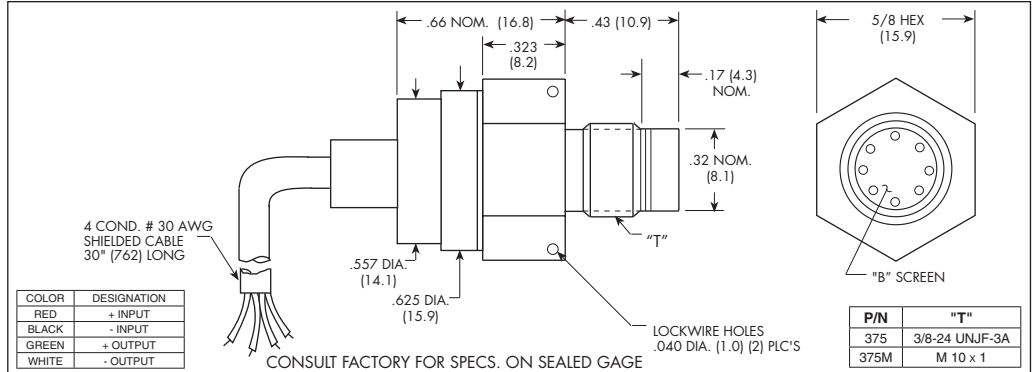


#### OPTIONAL CONNECTOR VERSION HERMETICALLY SEALED



PIN	DESIGNATION
A	+ INPUT
B	- INPUT
C	+ OUTPUT
D	- OUTPUT

PTIH-8-4P  
CONNECTOR



COLOR	DESIGNATION
RED	+ INPUT
BLACK	- INPUT
GREEN	+ OUTPUT
WHITE	- OUTPUT

P/N	"T"
375	3/8-24 UNJF-3A
375M	M 10 x 1

INPUT	1.7	3.5	7	17	35	70	170	350 BAR
Pressure Range	25	50	100	250	500	1000	2500	5000 PSI
Operational Mode	Absolute, Sealed Gage							
Over Pressure	2 Times Rated Pressure							
Burst Pressure	3 Times Rated Pressure							
Pressure Media	All Nonconductive, Noncorrosive Liquids or Gases (Most Conductive Liquids and Gases - Please Consult Factory)							
Rated Electrical Excitation	10 VDC							
Maximum Electrical Excitation	15 VDC							
Input Impedance	1000 Ohms (Min.)							
OUTPUT	1000 Ohms (Nom.)							
Output Impedance	100 mV (Nom.)							
Full Scale Output (FSO)	± 5 mV (Typ.)							
Residual Unbalance	± 0.1% FSO BFSL (Typ.), ± 0.5% FSO (Max.)							
Combined Non-Linearity, Hysteresis and Repeatability	Infinitesimal							
Resolution	120	210	285	425	550	720	910	1120
Natural Frequency (KHz)	N/A <<1x10 <sup>-6</sup>							
Acceleration Sensitivity % FS/g Perpendicular Transverse	100 Megohm Min. @ 50 VDC							
Insulation Resistance	-65°F to +350°F (-55°C to +175°C) (Max.)							
ENVIRONMENTAL	-40°F to +250°F (-40°C to +120°C)							
Operating Temperature Range	± 1% FS/100°F (Typ.)							
Compensated Temperature Range	± 1% /100°F (Typ.)							
Thermal Zero Shift	100g Peak, Sine up to 5000 Hz							
Thermal Sensitivity Shift	100% Relative Humidity							
Steady Acceleration and Linear Vibration	100g half Sine Wave 11 msec. Duration							
Humidity	3/8 - 24 UNJF or M10x1 Thread							
Mechanical Shock	4 Conductor 30 AWG Shielded Cable 30" Long							
PHYSICAL	10 Grams (Max.) Excluding Cable							
Pressure Port	Fully Active Four Arm Wheatstone Bridge Dielectrically Isolated Silicon on Silicon Patented Leadless Technology							
Electrical Connection	25 Inch-Pounds (Max.)							
Weight								
Pressure Sensing Principle								
Mounting Torque								

Note: Custom pressure ranges, accuracies and mechanical configurations available. Dimensions are in inches. Dimensions in parenthesis are in millimeters. Continuous development and refinement of our products may result in specification changes without notice - all dimensions nominal. (M)