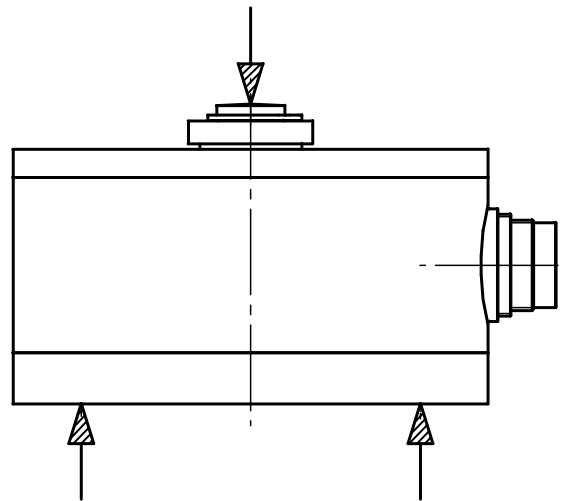


**Druckkraftwägezelle**  
**Compression Weighing Load Cell****W-2752**

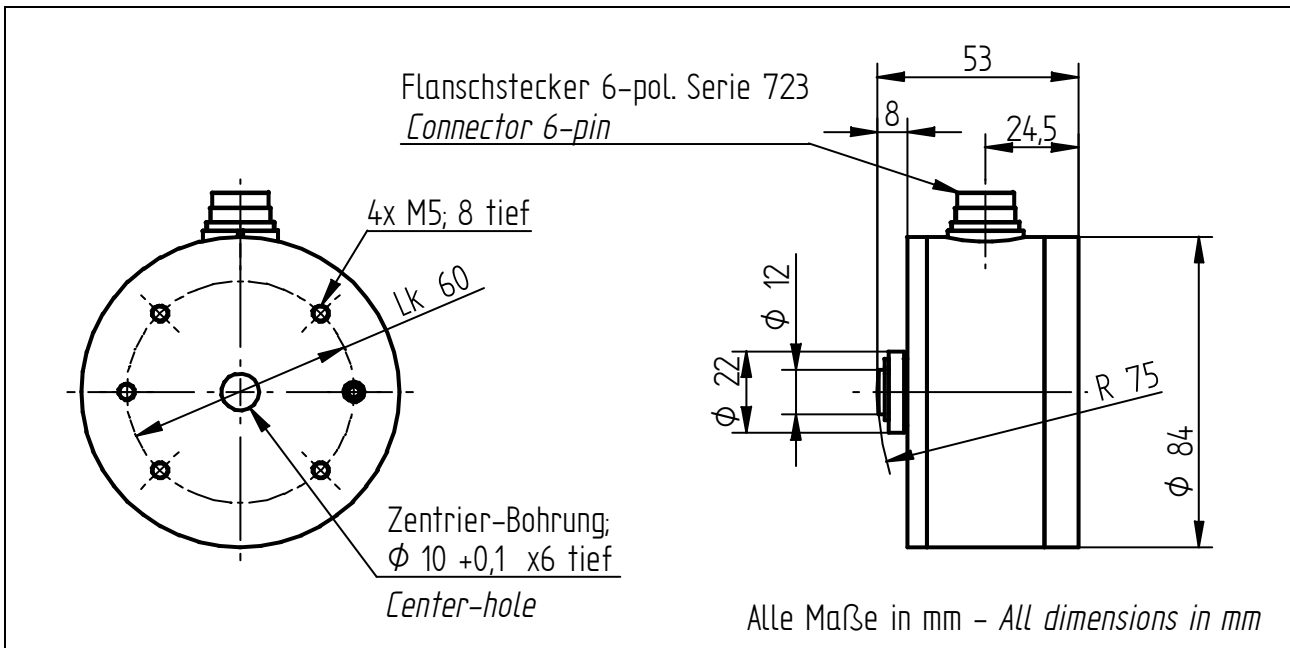
- Messbereich 3 ... 5 kg
- Überlastschutz
- Schutzart IP60
- *Measuring range 3 ... 5 kg*
- *Overload protection*
- *Level of protection IP60*

**Anschlussbelegung - Connection**

Versorgung (-) - <i>Supply (-)</i>	Pin 1
Versorgung (+) - <i>Supply (+)</i>	Pin 2
Schirm - <i>Shield</i>	Pin 3
Signal (+) - <i>Signal (+)</i>	Pin 4
Signal (-) - <i>Signal (-)</i>	Pin 5
Kontrolle (Option) - <i>Calibration control (option)</i>	Pin 6

**Mechanische Abmessungen - Dimensions**

**W-2752**



**TECHNISCHE DATEN - SPECIFICATIONS**

<b>Typ - Type</b>		<b>W-2752</b>
Messbereich - <i>Measuring range</i>	kg	3 / 5
Genauigkeitsklasse Druckkraft - <i>Accuracy class compression force</i>	S%	$\pm 0,1$
Grenzlast - <i>Limit load</i>	S%	150
Bruchlast - <i>Ultimate load</i>	S%	200
Brückenwiderstand - <i>Bridge resistance</i>	$\Omega$	832 $\pm$ 80
Isolationswiderstand - <i>Insulation resistance</i>	M $\Omega$ /50V	1000
Speisespannung - <i>Supply voltage</i>	V	1 ... 10
Nennkennwert (S) - <i>Sensitivity (S)</i>	mV/V	1,35 $\pm$ 18%
Temp.koeff. des Kennwertes - <i>Temp. coeff. of sensitivity</i>	S%/10K	$\pm 0,032$
Temp.koeff. des Nullsignals - <i>Temp. coeff. of zero signal</i>	S%/10K	$\pm 0,1$
Nenntemperaturbereich - <i>Nominal temperature range</i>	$^{\circ}$ C	-10 ... +40
Gebrauchstemperaturbereich - <i>Service temperature range</i>	$^{\circ}$ C	-20 ... +60
Rel. Kriechen - <i>Rel. creep</i>	S%/30min	$\pm 0,15$
Werkstoff - <i>Material</i>	Aluminium - <i>Aluminum</i>	
Schutzart - <i>Level of protection (DIN EN 60529)</i>	IP60	
Elektrischer Anschluss - <i>Electrical connection</i>	6-polig Serie 723 - <i>6-pin series 723</i>	

**Option - Option**

Kontrollsignal - <i>Control signal</i>	S%	100
--	----	-----

Bei der Bestellung bitte den gewünschten Messbereich angeben! *Please specify the required meas. range at order!*